

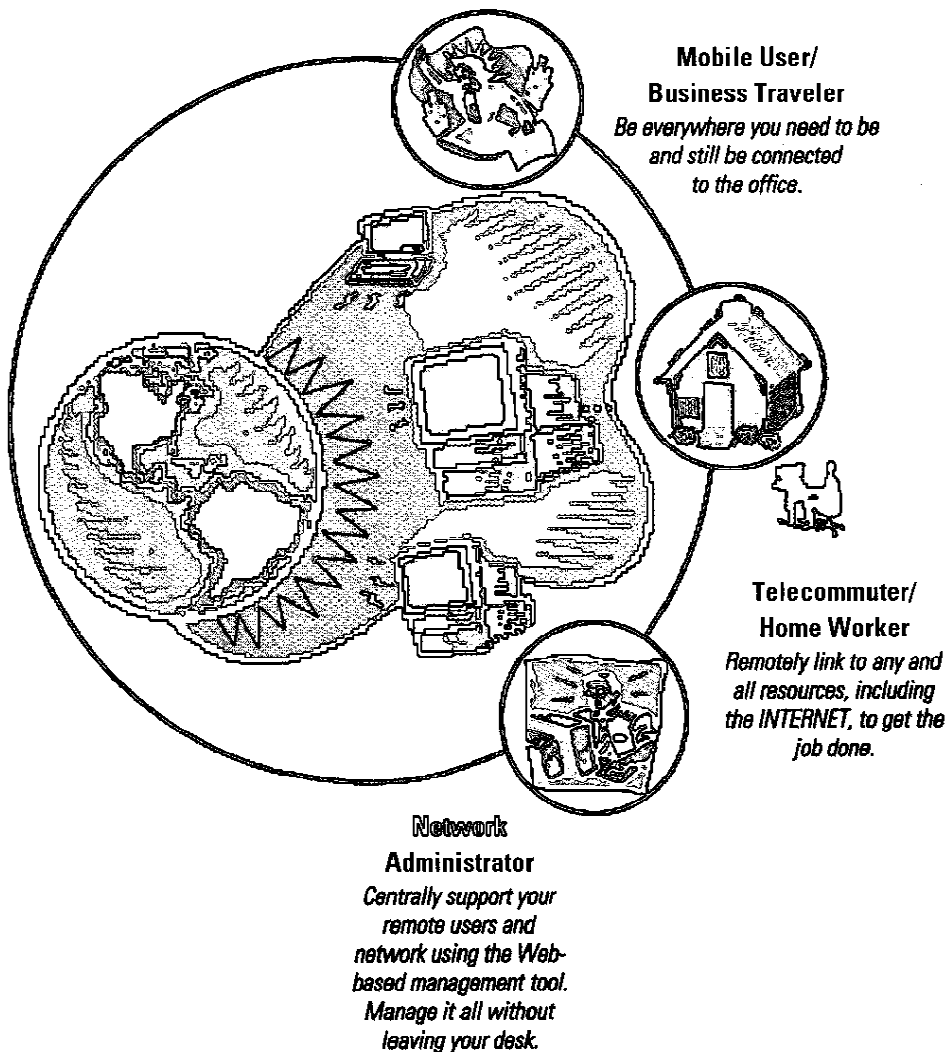
NETCommuter 1

Remote Access Server

Easy, Fast, Reliable and Secure

Designed for Small, Remote, and Branch Offices

NETCommuter, DPI's Remote Access Server (RAS), provides users with access to their office PCs, networks, and network resources anytime, from anywhere. It's the next best thing to being there. NETCommuter 1 is perfect for the small office, small company or remote/branch office of a large company.



Multiple Functions

Remote Node: Dial-In

- Full-fledged node on the network with Novell IPX, TCP/IP, and Apple ARA access to all LAN resources:
 - login to file servers
 - print to network printers
 - send and receive e-mail
 - use any other normal network service
- Full Windows 3.11, 95 and DOS support
- Banyan over TCP/IP support

Remote Control: Dial-In

- Fully take over your PC at work from anywhere over a NETCommuter connection
- Best INTERNET access
- Runs concurrently with Remote Node
- Runs in Windows and can control a PC that is running either DOS or Windows
- One remote control PC can control several LAN host PCs simultaneously - supported on both IPX and TCP/IP

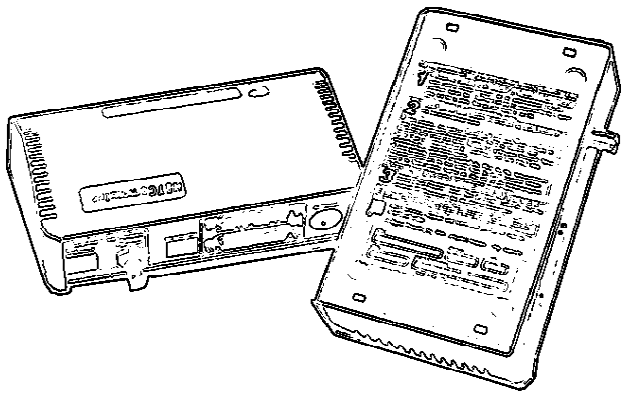
Dial-Out

- INTERNET line sharing
- Dial out to communication services (America On Line, CompuServe, etc.) and bulletin boards (BBS)
- Novell, TCP/IP (through Telnet), Apple, Banyan over TCP/IP support
- Supports modem pooling

Print Server

If you wish to use the print server function, you get:

- Award winning print server at no additional cost
- All DPI NETPrint 1000 print server features, including Novell, TCP/IP-UNIX, Apple, and Windows NT
- Concurrent print server and RAS operation with top performance for each function
- \$\$ savings on hub connections and NOS license fees



NETCommuter, DPI's remote access server, installs in three easy steps, and supports Remote Node, Remote Control, Dial-Out, and Print Serving

BENEFITS

Perfect for Small, Branch, and Remote Offices

Easy and Fast

Easiest RAS product on the market today to install, operate, and manage. Designed for small office, remote office, and branch offices where straight-forward operations and bullet-proof reliability are mandatory. A Motorola 68340 processor ensures fastest possible remote access, even with printing functions added, because they don't compete.

Seamlessly Scalable

No need to invest a lot of money up front; buy units one at a time as you need them and put them where you want them. Place units anywhere on your network, but access in and out on a pooled basis and manage them centrally. Multiple units offer redundancy so there's no single point of failure.

Inexpensive/No Hidden Costs

Save hundreds of dollars over competitive products -- includes unlimited remote client software licenses; 1 free remote control host license (for LAN PC) per NETCommuter 1 unit. Affordable price; two products for the price of one.

\$\$\$ Savings

NETCommuter supports both remote access and print server functions. Use one or both functions at no additional cost nor performance loss. Saves hundreds of dollars per unit because you need only one Ethernet connection, one Novell license, one wire, one hub connection, and no additional print server. The same modem can be set up for both inbound and outbound modem needs.

The Remote User's View

Mobile User/
Business
Traveler



Be everywhere
you need to be and still be
connected to the office.

Telecommuter/
Home Worker



Remotely link to
any and all resources,
including the INTERNET,
to get the job done.

Applications

- ✓ Access any and all office LAN resources while you're on the road
- ✓ Remotely take over and operate your own work PC from any location
- ✓ Work from home by linking to your office files and applications
- ✓ Access any network function, including: e-mail, text file transfer, database access, graphic transfer, workgroup applications, and order entry
- ✓ Access the INTERNET and bulletin board systems

Convenience

- ✓ Connects in less than one minute using automatic icons
- ✓ Integrated Remote Node and Remote Control can be operated concurrently
- ✓ Use simple, intuitive interfaces -- one screen for Remote Control, one for Remote Node

❖ REMOTE NODE

Use Remote Node when data being passed over the phone line is modest

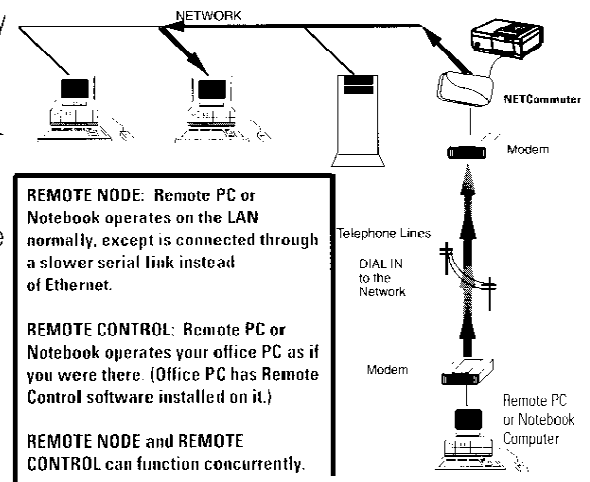
- e-mail
- word processing
- spreadsheet programs
- transferring files
- client-server (e.g. NOTES)

❖ REMOTE CONTROL

Use Remote Control for applications involving large amounts of data

- INTERNET access almost as fast as in your office
- Large centralized LAN applications (CAD, sales prospecting programs, etc.)
- Database searches
- Full use of office PC from the road

DIAL-IN: REMOTE ACCESS NODE AND CONTROL



The Network Administrator's View

Applications

NETCommuter is Easy to Install and Support

- ✓ Centralized management support of RAS users through an Inter/Intranet Web-based program
- ✓ Multiple units provide built-in redundancy in case of failure
- ✓ Motorola 68340 processor eliminates performance complaints
- ✓ 1 MB Flash provides flexibility for easy upgrades; update multiple units concurrently
- ✓ If you use both the RAS and print server, there's one less box, one less power cord, and one less ethernet connection -- makes your life easier

Convenience

- ✓ Solve network problems without leaving your desk
- ✓ Ease security concerns with password protection and restricted dial-back
- ✓ Gain network printing ability at no additional cost
- ✓ Locate printers up to 100 feet away from the unit with DPI parallel cables; use DPI's parallel distance extender for wiring closet setup

Network Administrator



Centrally support your remote network and users. Manage it all without leaving your desk.

NETCommuter is a Good Tool for Supporting Remote Offices, LANs and Users

- ✓ Dial backup for router links
- ✓ Help desk support of remote users through Remote Control software
- ✓ Perform system configurations and reboot host PCs remotely
- ✓ Install and upgrade individual work station software
- ✓ Seamlessly switch between DOS and Windows
- ✓ Conduct user training, customer education and sales demonstrations remotely
- ✓ Access/support network resources while you're out of the office

NETCommuter Features

Fast and Reliable

- Blazing speed: 4-6K total bytes/second
- Optimized phone line speeds
- Extensive use of Direct Memory Access (DMA) so the CPU is not burdened with data transfers
- Automatic re-establishment of failed connections

Safe and Secure

- Air-tight protection
 - Encrypted passwords
 - Secure and Roving dialback
 - CHAP, PAP
 - RAS and LAN security
 - Session limits and time-outs

Easy Installation

- Installs in minutes
- Three-step instructions printed on the RAS unit
- Just load software on individual PCs

Easy Operation

- One-step icon connection from Windows automates dialing, login, and drive mapping; normally connects in under 1 minute
- Icon builder included
- Automatic bootup configurations for DOS and Windows 3.11 supported

Easy Support

- Hardware operations guide and status LEDs, located on the top of the unit; troubleshoot at a glance
- Remote management over Inter/Intranet

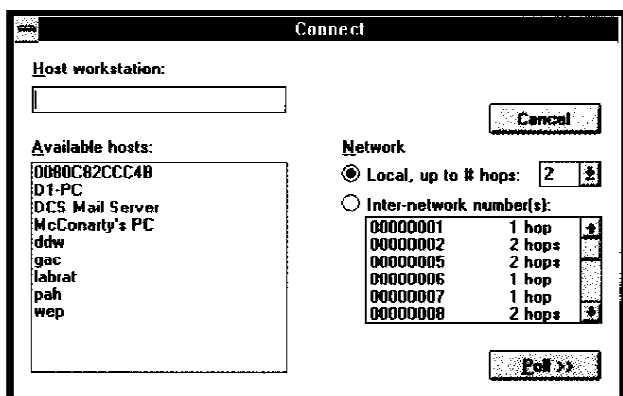
- NSDOCTOR, a Inter/Intranet Web-based utility program, makes it easy to provide remote and central management
- NETCommuter Cache utility (DOS)
 - warrants against accidental launching of large programs over the dial-up connection
 - provides for disk caching of frequently used programs

Compatibility/Operating Systems

- Full Novell, TCP/IP, Banyan over TCP/IP Dial-In and Dial-Out. Apple Dial-Out and ARAP Version 2 Dial-In. Telnet Dial-Out
- Painless integration with Lotus NOTES, MS Office, and others
- Works with any PPP remote access software, including Windows 95*, 3COM, Shiva, Digital Equipment's DECserver, Telebit NetBlazer, CISCO RAS products (*Remote Node only; Remote Control avail. Q197)
- Easy on User PC's RAM

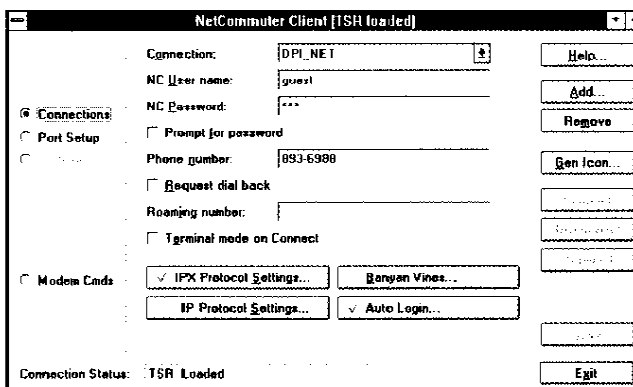
Flexibility

- 1 MB Flash ROM
 - central downloading of new features
 - simultaneous multiple upgrades
- Single port is better than multi-port products. Buy multiple products. If one unit goes down, others still operate



Left: NETCommuter's Remote Control Connect Screen provides users a choice of available host machines.

Right: NETCommuter's Remote Node function includes one-step icon connection for automatic dialing, login, and drive mapping.



Technical Specifications

Remote Access Server

IP and IPX/PPP communications server compliant with standard PPP and supports any PPP compliant client Full-featured Windows 3.11 Windows 95 PPP compliant compatibility High speed 115 KB AppleTalk communications server supports any Apple ARA 2.0 client Inter/Intranet Web-based and MAC based management and configuration software Unlimited client user licences Remote Node and Remote Control connections Simultaneous Remote Node and Remote Control sessions Standard CHAP and PAP authentication Both secure and roaming dial-back

Dial-Out Modem Sharing

IP, IPX and AppleTalk NASI/NCSS and Interrupt 14h compatibility in the PC client Modem pooling Compatibility with the MAC Communications Toolbox API, Microphone, ZTerm, AOL, CompuServe and other popular MAC communications utilities Windows, and MAC based management and configuration software Unlimited user licenses

Other Remote Access Features

Remote Node and/or Remote Control Router capabilities: single protocol routing, multi-protocol routing LAN interface type: Ethernet AUI, BNC, 10 BaseT WAN interface: Analog dial-up Dial-Up protocol: PPP, ARAP Max # of LAN sessions: 1 Data compression ratio: 4:1 Network management: Proprietary -- HTTP, Windows, MAC Client software: DOS, Windows, MAC, UNIX (price/client included) Modem/Facilities management: Configure device from PC on network

Print Server

NETCommuter includes DPI's NETPrint technology for print serving which provides transparent, simultaneous access to two network parallel printers operating multiple protocols. For more details, see DPI's NETPrint 1000 data sheet.

Network Operating Systems

NetWare
Novell NetWare v2.2, 3.x, 4.x -- full bindery emulation support for 3.0+ Developed under the Novell NEST program 16 file servers and unlimited queues Enhanced encrypted passwords 1000 user NetWare site licenses IPX and SPX for full Novell utility support, e.g. PCONSOLE and NWADMIN PSC commands and Forms printing Notify under Windows and DOS

UNIX, Windows NT V3.5+, Windows for Workgroups and LAN Server R4.5+, TCP/IP, and Banyan over TCP/IP

Host and no host LPD printing Host software provided for SUN (Solaris 1.1, 2.0), DEC (Ulrix 4.3), AT&T (System V release 4), HP-UX, IBM-AIX, SCO and Alpha OSF Telnet, PING, BOOTP and RARP Windows NT, LAN Server & Windows for Workgroups printing via TCP/IP through LPD Sub net address Gateways Auto form feed sensing

Apple EtherTalk/TokenTalk
Standard Chooser Macintosh System (6.x, 7.x) LaserWriter drivers Ethertalk Phase 2 Displays all printers in chooser Apple-based management software

Diagnostics

Two-color LED shows status Inter/Intranet Web-based HTTP Server, and, NSDOCTOR for Windows utility provides centralized management and diagnostics

Remote Access Server Hardware Dial-In and Dial-Out

1 high-speed serial port for modem sharing 2 high-speed parallel ports for printer sharing All ports can be active simultaneously

Remote Client Hardware Requirements

286 PC or higher; 386 or higher recommended High-speed serial (COM) port 16450 or 8250 UART; 16550 UART for best performance Modem: 9600 bits/second or higher over telephone line; 28.8 modem recommended NETCommuter

Client Software Requirements

DOS: MS-DOS 3.3 or higher Windows: Windows 3.1 or higher

General Specifications

Size: 7" x 4" x 2"; Weight: 20 oz. Environment: 32-122°F, 5-80% humidity Power 115VAC or 230VAC input; 5VDC 1.5A output; external transformer, power consumption 20VA

Package includes

NETCommuter 1 Power Supply Uniport Modem Connector Manuals: Administrator's Guide, User's Guide, Quick Setup and User's Tutorial Installation Disks (7): NETCommuter Administrative Software (NSDOCTOR, AppleTalk Administrative Program, TCP/IP Program) NETCommuter Client Software (Windows NETCommuter Client for Dial-Out Communications, Macintosh NETCommuter Client for Dial-Out Communications, Remote Access Client and Remote Control Host)

Warranty

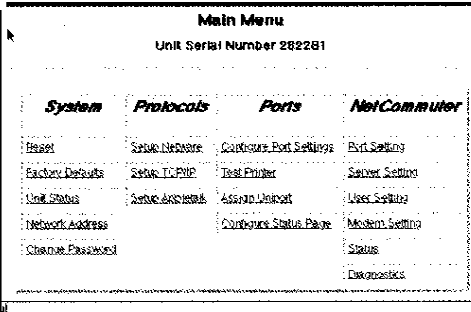
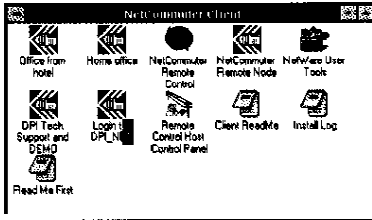
3 year standard, 6 years on return of warranty card Toll-Free customer service Free overnight replacement unit in case of unit failure within 90 days following purchase

Classifications

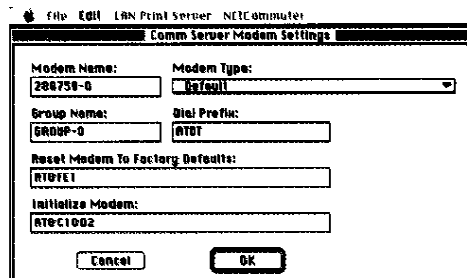
FCC Class A, TUV, CSA, UL Digital Products, Inc.



Connect in less than one minute using automatic icons.



NSDOCTOR, a Web-based utility program, makes it easy to provide remote and central management.



Remote and central management are easily provided to network administrators using ARAP.

For more information

Phone: (617) 647-1234 or (800) 243-2333
FAX: (617) 647-4474
Web: <http://www.digprod.com>
e-mail: salesinfo@digprod.com
AppleLink: DIGPROD and DPI.TECH



Leader in Network Connectivity

DIGITAL PRODUCTS, INC.

411 Waverley Oaks Road, Suite 227, Waltham, MA 02154
(617) 647-1234 / (800) 243-2333 / FAX (617) 647-4474

An Osicom Technologies Company

Digital Products has been making it easy for users to share networking products for almost a decade. In addition to NETCommuter, we also offer NETPrint (external single and multiple protocol print servers), JETXPrint (an internal board for Hewlett-Packard MIO printers) and PrintDirectors for sharing printers without a network. For more information, a complete catalog or the reseller near you:

Call TOLL FREE (800) 243-2333

Ordering Guide

Model	Part Number	Operating Systems			Flash ROM	Network Connection	Parallel Printers
		NetWare	UNIX & WinNT	Apple			
NETCommuter 1	NETC1E/N	✓	✓	✓	✓	Ethernet	2
NCHOSTPACK 1	NCHOST-1	1 additional NETCommuter Remote Control host license					
NCHOSTPACK 3	NCHOST-3	3 additional NETCommuter Remote Control host licenses					
NCHOSTPACK 10	NCHOST-10	10 additional NETCommuter Remote Control host licenses					
Parallel Distance Extender	CPDE-OUT	Locate printer or PC up to 4000' from NETCommuter -- From PC to NETCommuter or from NETCommuter to printer (Output: 2 units)					

DPI has made every effort to ensure that the information enclosed is accurate. Digital Products is not responsible for inadvertent errors. Specifications are subject to change without notice. NETCommuter, NETPrint, and JETXPrint are trademarks of Digital Products, Inc. All other trademarks are recognized to be the property of their respective holders.